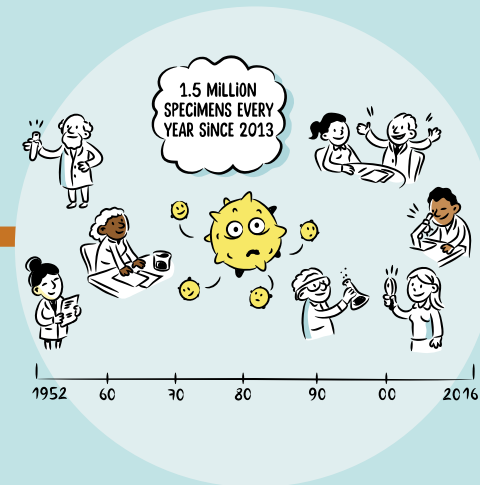
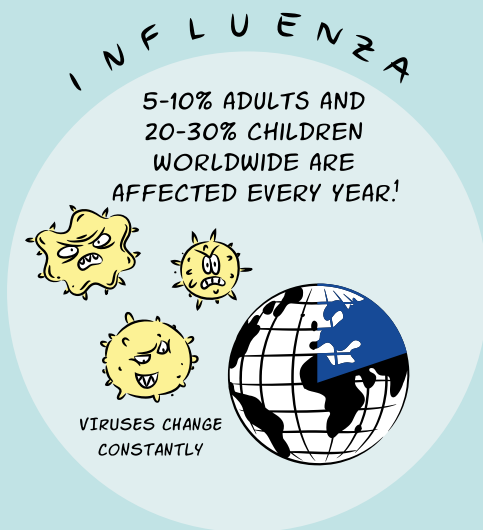


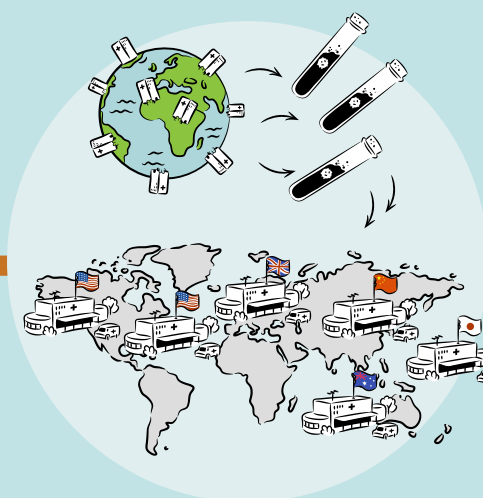
# THE EXCITING JOURNEY FROM FLU VIRUS TO VACCINE

## SURVEILLANCE ACTIVITIES BEFORE MANUFACTURING



GLOBAL INFLUENZA SURVEILLANCE IS DRIVEN BY THE WORLD HEALTH ORGANIZATION'S (WHO) **G**LOBAL **I**NFLUENZA **S**URVEILLANCE AND **R**ESPONSE **S**YSTEM.

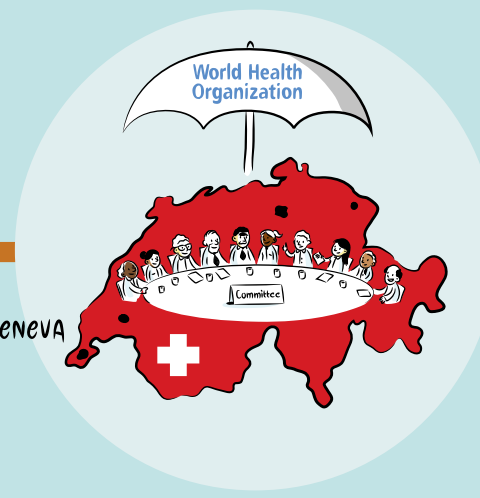
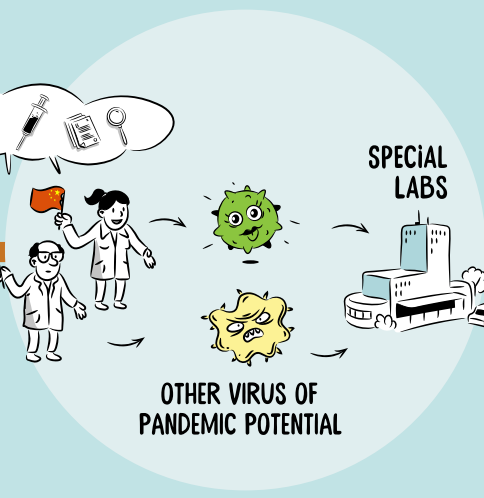
THOUSANDS OF SCIENTISTS WORLDWIDE COLLABORATE AND ANALYSE VIRUSES AND SURVEILLANCE DATA



THESE CENTERS SEND REPRESENTATIVE SAMPLES AND ISOLATED STRAINS OF THE VIRUS TO THE 6 WHO COLLABORATING CENTERS

MORE THAN 110 COUNTRIES HAVE SUCH CENTERS THAT COLLECT SAMPLES AND GET PRACTICAL SUPPORT AS PART OF THE WHO NETWORK

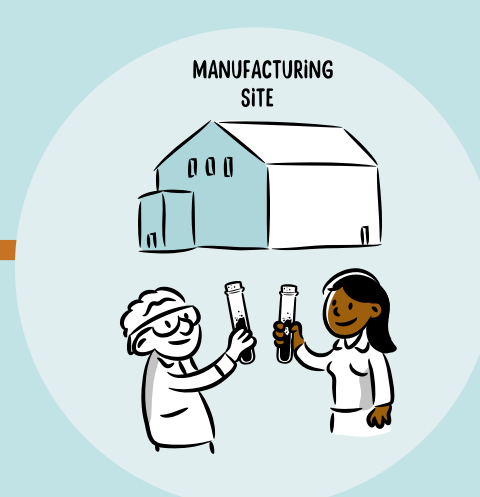
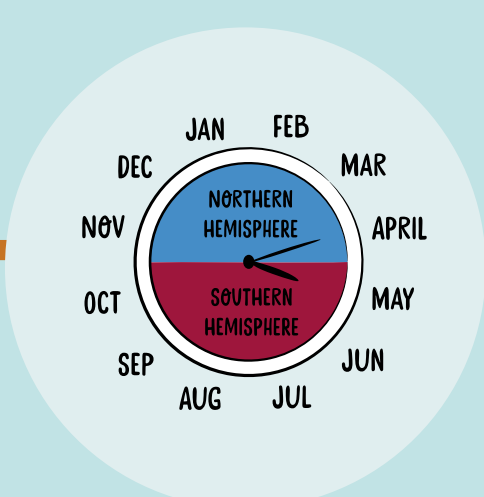
A DOCTOR ANYWHERE IN THE WORLD TAKES VIRUS SAMPLES FROM A PATIENT AND SENDS THEM TO THEIR NATIONAL INFLUENZA CENTER



ONCE THESE 6 CENTERS RECEIVE THE VIRUS STRAINS, THEY RUN ADVANCED ANTIGENIC AND GENETIC ANALYSES

THE COLLABORATING CENTERS MONITOR CHANGES IN THE STRAINS AND DETERMINE THE COMPOSITION OF THE NEW VACCINE. THEY THEN SHIP THE VIRUSES TO SPECIALIZED LABS TO DEVELOP A SPECIAL FORM OF VIRUSES FOR THE VACCINE PRODUCTION

THE WHO SCIENTIFIC COMMITTEE FOR INFLUENZA VACCINE COMPOSITION MEETS TWICE PER YEAR TO DECIDE WHICH VIRUS STRAINS SHOULD GO INTO VACCINE MANUFACTURING



HIGH PRIORITY GROUPS FOR FLU VACCINATION: CHILDREN AGED 6-59 MONTHS - PREGNANT WOMEN - ELDERLY - HEALTH-CARE WORKERS - INDIVIDUALS WITH SPECIFIC CHRONIC MEDICAL CONDITIONS

THE CONCERTED YEAR-ROUND EFFORT BY THOUSANDS OF HEALTHCARE PROFESSIONALS, SCIENTISTS, AND VACCINE MANUFACTURERS WORLDWIDE IS A VITAL STEP IN DEVELOPING THE FLU VACCINE

EVERY YEAR, THE SELECTED VIRUSES ARE SHIPPED TO MANUFACTURERS WORLDWIDE TO START THE VACCINE PRODUCTION, IN BIG QUANTITIES, HIGH QUALITY, AND WITHIN SPECIFIC TIMELINES!

1: WHO SAGE POSITION PAPER ON INFLUENZA VACCINES, NOVEMBER 2012

[HTTP://WWW.IFPMA.ORG/RESOURCE-CENTRE/THE-EXCITING-JOURNEY-FROM-FLU-VIRUS-TO-VACCINE/](http://www.ifpma.org/resource-centre/the-exciting-journey-from-flu-virus-to-vaccine/)